

# Illusions Colour Chart

Transforms ideas into reality

## larson®

Aluminium composite panels for architectural envelopes

## larcove®

Aluminium honeycomb panels for architectural envelopes



**Alucoil®**  
Grupo Alibérico



Cité des Civilisations du Vin (Bordeaux, France)  
**HOLO Gold Silver**  
 Architect: X-TU

### HOLO FINISHES

The survival of any species is very related to the capacity to adapt to the environment. Alucoil® has been inspired by the ease of chameleons to change their image to create this range of Holo finishes, where a finish becomes two and even three different colours depending on how the light affects the façade.

Eyesight different  
**#change colours**  
**#iridescent**

**larson®**      **larcove® A2**

## Illusions HOLO



HOLO  
**Pure White Gold 90G** (ES1708)



HOLO  
**Red Green 90G** (ES1627)



HOLO  
**Opal Blue Green 90G** (ES1560)



HOLO  
**Iriodin Gold 30G** (ES1861)



HOLO  
**Gold Silver 30G** (ES1711)



HOLO  
**Grey Pink 90G** (ES1488)



HOLO  
**Desert Gold 90G** (ES1995)



HOLO  
**Galaxy Blue 90G** (ES1361)



HOLO  
**Red Orange 90G** (ES1666)



HOLO  
**Blue Gold 80G** (ES1613)



HOLO  
**Green Blue 30G** (ES1614)



HOLO  
**White Silver 90G** (ES1388)



National College of High Speed Rail (Doncaster, UK)  
**ALUNATURAL Anodic Brushed Glossy**  
 Architect: Bond Bryan Architects

### ALUNATURAL FINISHES

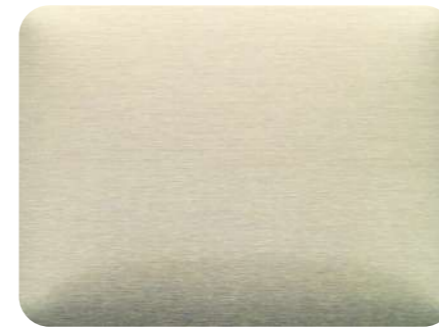
Because sometimes there is no better finish than the one given by our surroundings, the range of Alunatural finishes offer different types of reflection, sharpness and even colours depending on the desired target.

Reality Effect  
**#reflectioncolours**  
**#sharpnesscolours**

**larson®**    **larcove® A2**

Attention to the special characteristics of the Alunatural and Real Anodized range finishes detailed in the technical specification (request them from your **Alucoil®** contact). Alunatural and Real Anodized finishes range not recommended in aggressive environments / coast.

## Illusions ALUNATURAL



ALUNATURAL  
**Gold Brushed 60G** (ES1544)



ALUNATURAL  
**Elox Umber TL 10G** (ES2033)



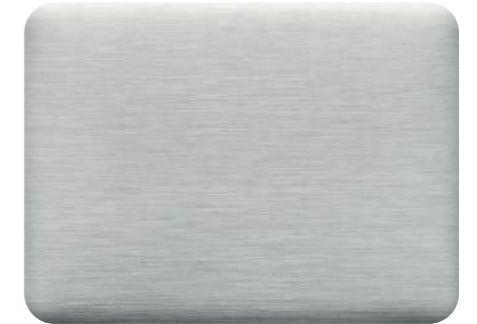
ALUNATURAL  
**Champagne Brushed 90G** (ES1581)



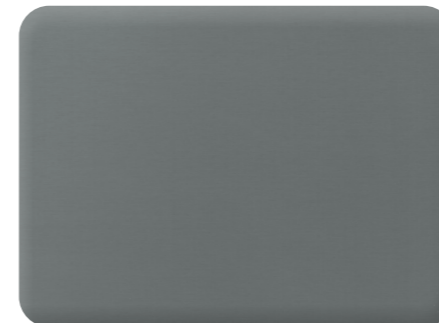
ALUNATURAL  
**Bright TL 90G** (ES1448)



ALUNATURAL  
**Anodic Brushed Glossy 90G** (ES1623)



ALUNATURAL  
**Anodic Brushed Matt 10G** (ES1757)



ALUNATURAL  
**Titanium Brushed 10G** (ES1370)



ALUNATURAL  
**Quartzinc Brushed 10G** (ES1736)



ALUNATURAL  
**Amber Brushed 40G** (ES2111)

## Illusions REAL ANODIZED



REAL ANODIZED **Natural 8µ** (ES1341)  
 Only **larson®**



REAL ANODIZED **C-Brite 8µ** (ES2017)  
 Only **larson®**

Weybridge Business Park (Surrey, UK)  
ANODIZED LOOK **Black C35**  
Architect: Scott Brownrigg



## ANODIZED LOOK FINISHES

To anodize is to protect, but also to beautify the aluminium.

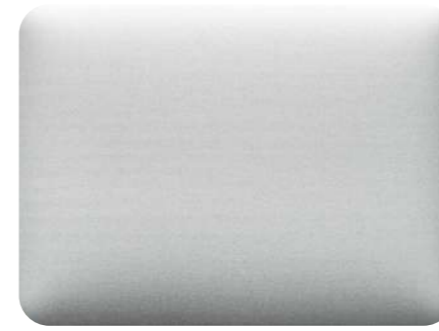
**Alucoil®** has a wide portfolio of finishes that match anodized finishes, keeping the folding and curving properties of composite panels. There are no limits to elegance.

Elegance in the design  
**#nolimitstoelegance**  
**#protectcolours**

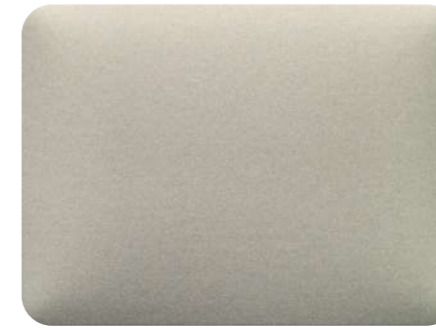
**larson®**  
**larcore® A2**



## Illusions ANODIZED LOOK



ANODIZED LOOK  
**Silver EV1** (ES1749)



ANODIZED LOOK  
**Silver Bronze C31** (ES1635)



ANODIZED LOOK  
**Light Bronze C32** (ES1417)



ANODIZED LOOK  
**Middle Bronze C33** (ES1444)



ANODIZED LOOK  
**Dark Bronze C34** (ES1427)



ANODIZED LOOK  
**Black C35** (ES1419)



ANODIZED LOOK  
**Autumn** (ES1633)



ANODIZED LOOK  
**Art Nouveau Gold** (ES1483)



ANODIZED LOOK  
**Dark Grey** (ES1459)



ANODIZED LOOK  
**Shadow Grey 9007** (ES2085)



ANODIZED LOOK  
**Dark Copper** (ES1799)



ANODIZED LOOK  
**Champagne Bronze** (ES1800)

# larson®

## Aluminium composite panels for architectural envelopes



- Protective film
- Coated aluminium**
- Mineral FR or A2 Core
- Aluminium with protection primer**

**larson® FR** aluminium composite panel, is a high-tech product for architectural façade cladding. It is formed with two aluminium sheets, 5005 alloy, bonded by a mineral fire retardant (FR) core. **Alucoil®** has developed this core that delays panel combustion.

**CERTIFICATION: EPD®** Environmental product declaration

**TESTS:**

- **B-s1, d0** EN 13501-1 (**Alucoil®**'s vertical riveted & 45mm cassette installation systems).
- **BS 8414-1** Full scale test (details of tested constructive system appear in Tecnalia's 070717-002A report).
- **NFPA 285** Full scale test (details of tested constructive system appear in Intertek's 102936114SAT-004B report).

**larson® A2** is the new aluminium composite panel developed by **Alucoil®**'s R&D department for architectural cladding. This panel has been developed to be used in those countries whose regulations prevent the use of other types of composite panels which don't achieve the **A2-s1, d0** fire class.

**TESTS:**

- **A2-s1, d0** EN 13501-1 (**Alucoil®**'s vertical riveted & 45mm cassette installation systems).
- **BS 8414-2** Full scale test (cassette installation system).



Hotel d'agglomération (Bayonne, France)  
**HOLO Gold Silver**  
 Architect: Gardera-D

# larcore® A2

## Aluminium honeycomb panels for architectural envelopes



- Protective film
- Coated aluminium**
- Bonding layer
- Aluminium honeycomb core**
- Bonding layer
- Aluminium**



**1. larcore® A2 14 mm.** A proposal based on clips that fix the edged panels to a very reduced substructure. A new concept that is extraordinarily light, non-combustible and with perfect flatness.

Certifications: **EPD® Environmental product declaration**

Classifications: **Fire classification A2-s1, d0 EN 13501-1 & M0 NF P 92-501**

**2. larcore® A2 6 mm.** An innovative solution that reduces the substructure on the façade by 30%, but can be fabricated with traditional tools.

Certifications: **EPD® Environmental product declaration**

TESTING: **Large scale test BS 8414-1 & BS 8414-2**, with **Alucoil® Hidetech® LIGHT** installation system.

Classifications: Same composition and quantity of adhesive as **larcore® A2 14 mm + Hidetech® PRO** installation system by **Alucoil®**, classified **A2-s1, d0** according to EN 13501-1, and as **larcore® A2 8 mm** and **25 mm**, classified **M0** according to NF P 92-501.

**3. larcore® A2** range of panels with 8 - 10 - 14 or 20 mm thickness.

Panels developed for systems present in the market such as glued, riveted or screwed.

[Extended technical data sheet available upon request.](#)

Please request with technical department to confirm exact values to be used in specific calculations or projects.



Banco Santander (Madrid, Spain)  
**ALUNATURAL Anodic Brushed**  
 Architect: Ayala Arquitectos

HMC School Rotterdam (Rotterdam, Holland)  
 TEXTURED **Basalt**, RAL 2001 & 7016  
 Architect: RoosRos Architecten



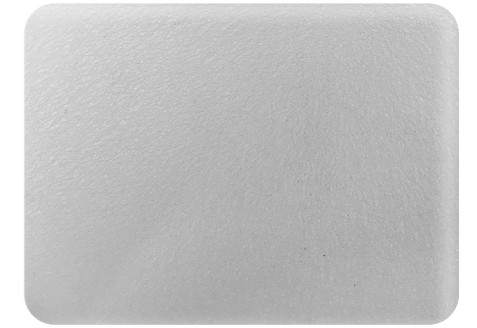
## Illusions TEXTURED



TEXTURED  
**Oxide 1** (ES1869)



TEXTURED  
**Oxide 2** (ES1868)



TEXTURED  
**Rough White** (ES1924)



TEXTURED  
**Rough Silver** (ES1950)



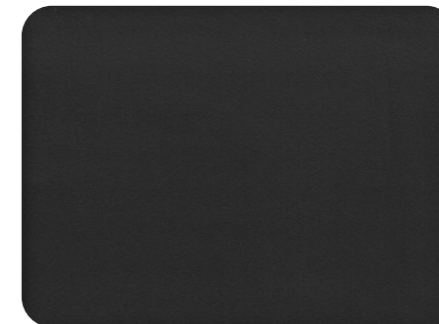
TEXTURED  
**Rough Grey** (ES1475)



TEXTURED  
**Rough Slate** (ES1783)



TEXTURED  
**Glistening Snow** (ES1598)



TEXTURED  
**Jet Black** (ES2012)



TEXTURED  
**Basalt** (ES1652)

## TEXTURED & DESIGN FINISHES

Why be satisfied with any kind of finish if we can match the desired texture with the maximum coating quality?  
 The range of customized colours mimics the touch of ceramics, the oxide of metals, the texture of basalt all with the durability and lightweight qualities of a composite panel.

Projects with personality  
**#customized**  
**#exclusive**

**larson®**  
**larcore® A2**



## ACM PVC 200µ

Consult possibilities and properties concerning ACM PVC 200µ



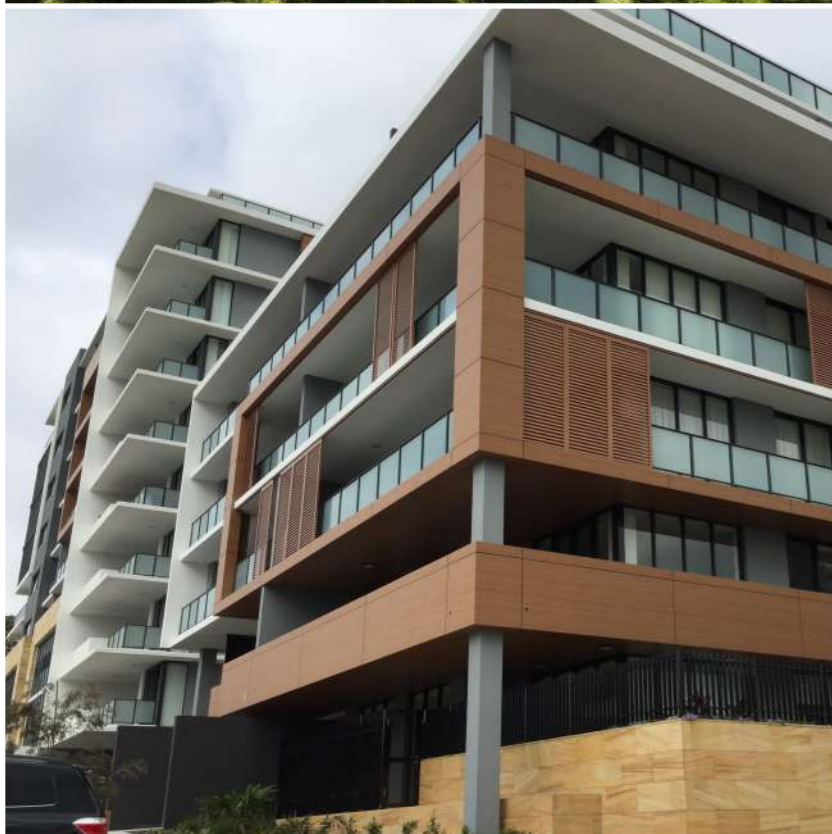
DESIGN PVC  
**Wood Concrete Oak** (ES2107)



DESIGN PVC  
**Wood Alpino Oak** (ES2108)



DESIGN PVC  
**Wood Malta Oak** (ES2109)



# Illusions DESIGN



DESIGN  
**Weathered Zinc 1** (ES1327)



DESIGN  
**Weathered Zinc 2** (ES1540)



DESIGN  
**Corten Steel 2** (ES1528)



DESIGN  
**Wood Colonial Walnut** (ES1333)



DESIGN  
**Wood Colonial Red** (ES1482)



DESIGN  
**Wood Dark Wenge** (ES1463)



DESIGN  
**Wood Light Wenge** (ES1665)



DESIGN  
**Wood Elegant Oak** (ES1535)



DESIGN  
**Wood English Cherry** (ES1524)



DESIGN  
**Spotted Concrete** (ES1689)



DESIGN  
**Travertino** (ES1674)

Isenberg School of Management Business Innovation Hub (Amherst, MA, United States)  
**larson® METALS Copper**  
 Architect: Bjarke Ingels Group



## METALS RANGE

Natural appearance makes these composites the ideal ecological solution and provides the sensation of liveliness from nature's finest elements.

Possibilities with **larson®** composite panels:

- Stainless Steel,
- Copper
- Brass
- Zinc

Possibilities with **larcore® A2** Honeycomb panels:

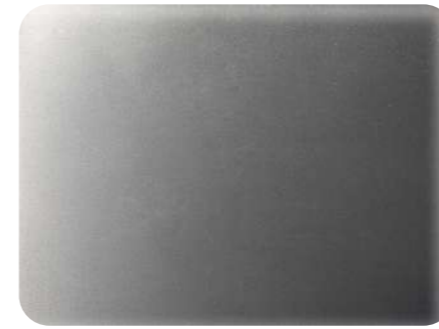
- Zinc



Orygen hospital (Melbourne, Australia)  
**larcore® A2 METALS Zinc Red, Zinc Green & Zinc Slate**  
 Architect: Billard Leece Partnership



## Illusions METALS



METALS **Stainless Steel 2D**  
Only larson®



METALS **Stainless Steel Wf30**  
Only larson®



METALS **Stainless Steel Brilliant BA**  
Only larson®



METALS **Copper Natural**  
Only larson®



METALS **Brass Natural**  
Only larson®



METALS **Zinc Slate** (ES1274)



METALS **Zinc Brown** (ES1556)



METALS **Zinc Red** (ES1275)



METALS **Zinc Green** (ES1523)



METALS **Zinc Gold** (ES2096)



METALS **Zinc Blue** (ES1522)





# Alucoil®

Grupo Alibérico

Specialists in the Manufacture of  
Advanced Materials for  
Architectural Envelopes

Polígono Industrial de Bayas.  
C/ Ircio. Parcelas R72-77  
09200 Miranda de Ebro, Burgos, SPAIN  
Tel.: +34 947 333 320  
[www.alucoil.com](http://www.alucoil.com)  
[info@alucoil.com](mailto:info@alucoil.com)



[alucoildesign.com](http://alucoildesign.com)

Alucoil® S.A.U. reserves the right to change or remove information contained in this brochure without prior notice.  
Please visit us at [www.alucoil.com](http://www.alucoil.com) to check the latest version.

SEPTEMBER 2021